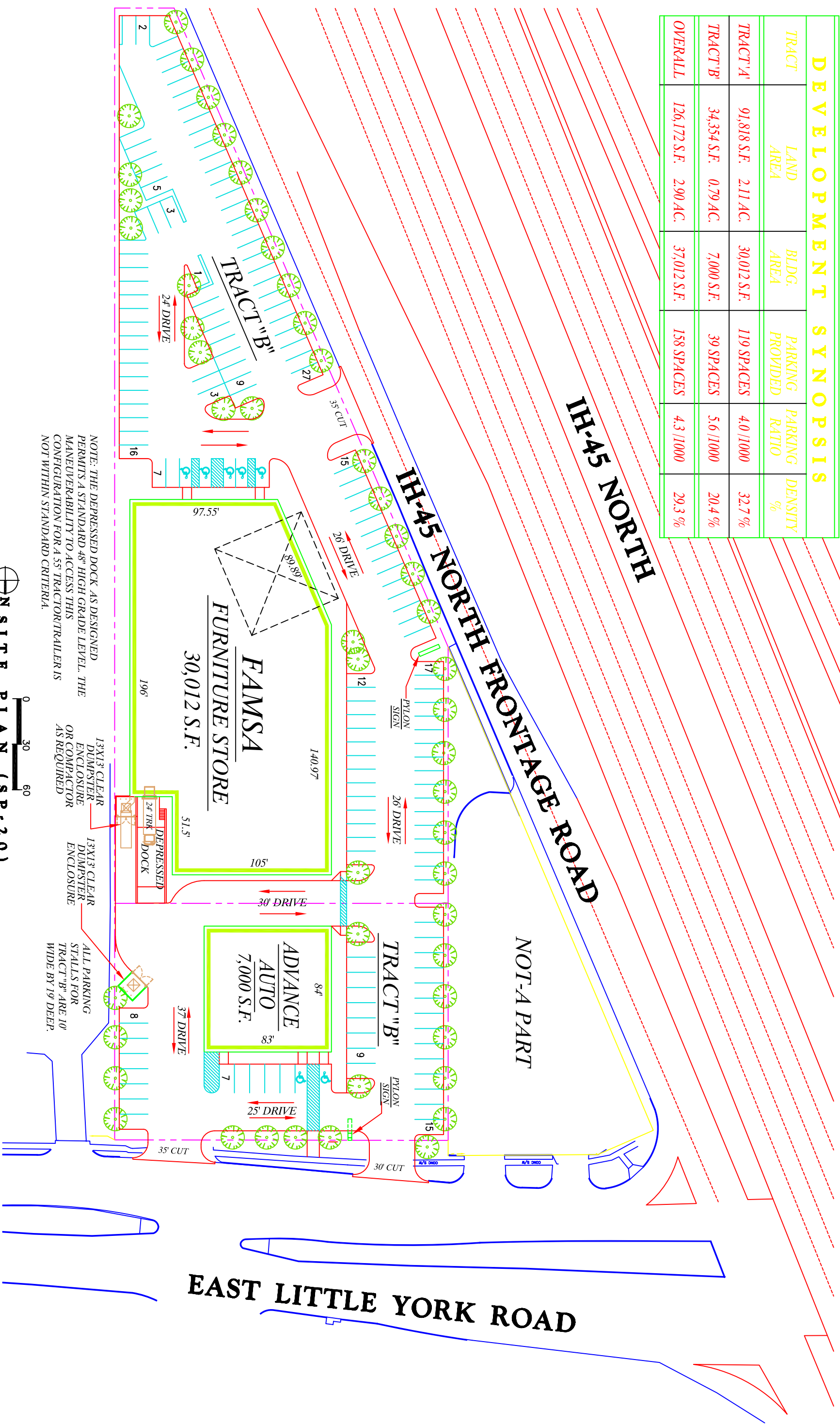


DEVELOPMENT SYNOPSIS					
TRACT	LAND AREA	BLDG. AREA	PARKING PROVIDED	PARKING RATIO	DENSITY %
TRACT 'A'	91,818 S.F.	30,012 S.F.	119 SPACES	4.0/1000	32.7%
TRACT 'B'	34,354 S.F.	7,000 S.F.	39 SPACES	5.6/1000	20.4%
OVERALL	126,172 S.F.	37,012 S.F.	158 SPACES	4.3/1000	29.3%



NOTE: THE DEPRESSED DOCK AS DESIGNED PERMITS A STANDARD 48" HIGH GRADE LEVEL. THE MANUEVERABILITY TO ACCESS THIS CONFIGURATION FOR A 55' TRACTOR/TRAILER IS NOT WITHIN STANDARD CRITERIA.

0 30 60
 ON SITE PLAN (SP-20)
 05004.00
 SEPTEMBER 14, 2005

LITTLE YORK CORNER
 NEC I-45 NORTH @ EAST LITTLE YORK
 HARRIS COUNTY, TEXAS



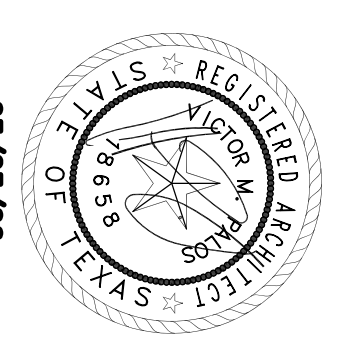
2010 S.W. BIRCH ST. SUITE 210
 NEWPORT BEACH, CA 92660
 (949) 660-7985 (FAX) 660-7987
 CONTACT: JULIO GONZALEZ, ARCHITECT

325 NO. SECOND AVE. SUITE F
 UPLAND, CA 91786
 (909) 982-1717 (FAX) 982-6626
 CONTACT: VICTOR PALOS, ARCHITECT

111 NO. LA BREA AVE. SUITE 307
 INGLEWOOD, CA 90301
 (310) 693-0585 (FAX) 693-0593

CONSULTANT:

PROFESSIONAL SEAL:

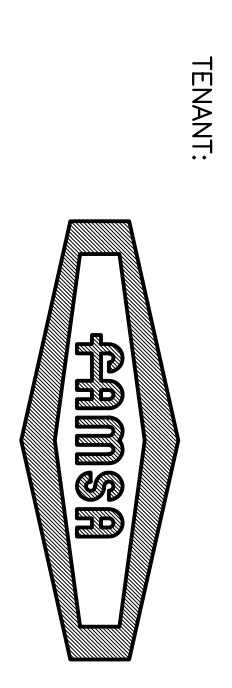


SHEET TITLE:
**EXTERIOR
 ELEVATIONS**

NO.	DATE	ISSUES & REVISIONS	BY	APPRO.
1	12/20/05	PC SUBMITTAL		
2	1/11/06	BID SET		
3	2/02/06	PC RESPONSES / COORDINATION		
4	3/23/06	PC RESPONSES / COORDINATION		
5	3/28/06	PC RESPONSES / COORDINATION		
6	4/03/06	ISSUED FOR CONSTRUCTION		

REMARKS: SEPARATIONS AND OTHER VISUAL AIDS, AS WELL AS DIMENSIONS, SHALL BE SHOWN WITH THE GREATEST PRECISION AND ACCURACY POSSIBLE. THE ARCHITECT SHALL BE RESPONSIBLE FOR THE PROPER USE OF DIMENSIONS AND VISUAL AIDS. THE ARCHITECT SHALL BE RESPONSIBLE FOR THE PROPER USE OF DIMENSIONS AND VISUAL AIDS. THE ARCHITECT SHALL BE RESPONSIBLE FOR THE PROPER USE OF DIMENSIONS AND VISUAL AIDS.

COPYRIGHT STUDIO 3 ARCHITECTS 2005

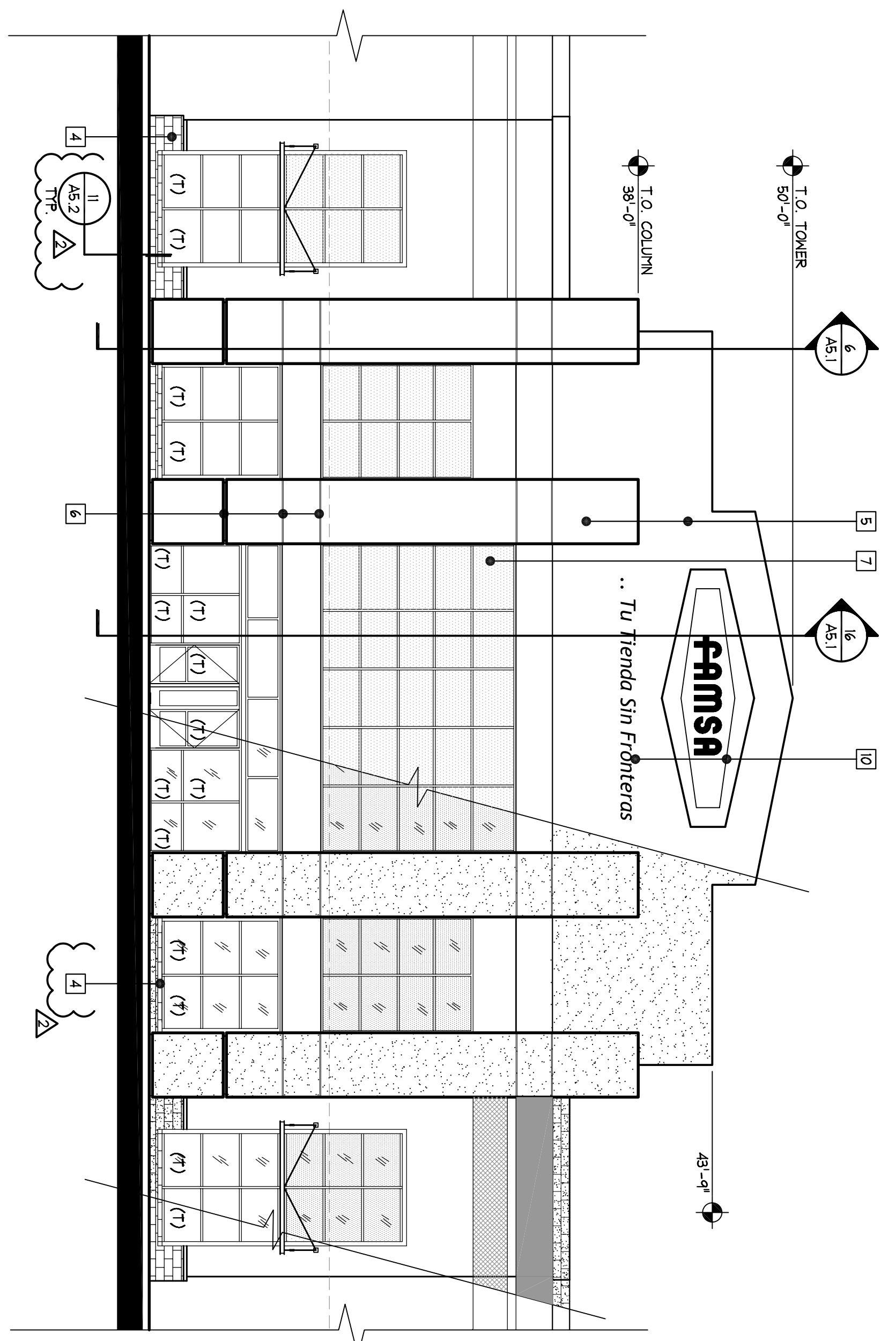


TEENANT:
FAMSÁ, INC.
 ATTN: OSCAR BRACAMONTE
 1810 S. BROADWAY
 LOS ANGELES, CA 90015
 (213) 763-7877
 (FAX) 763-7876

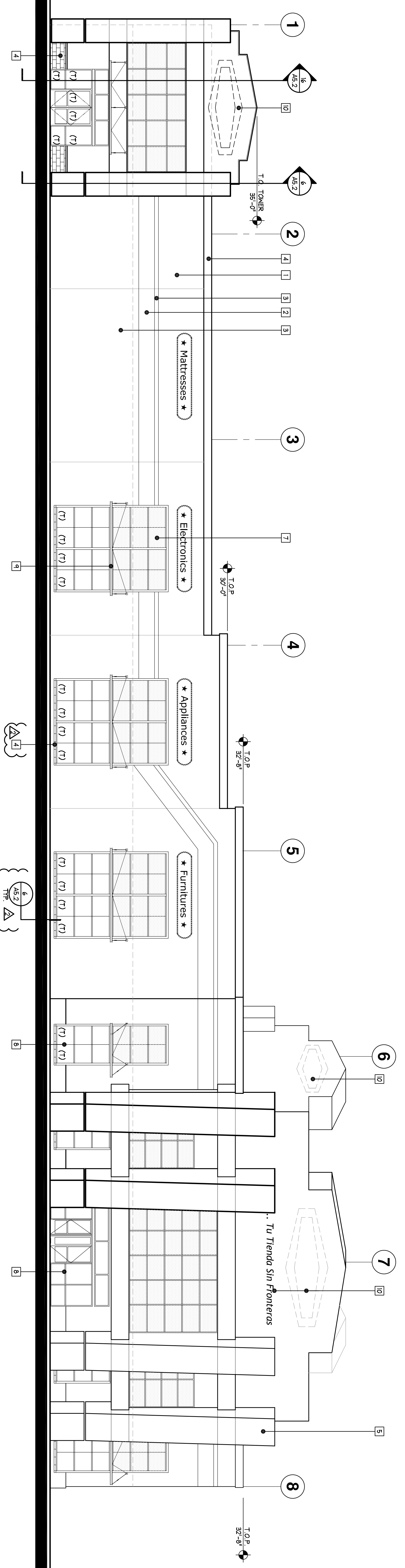
7440 NORTH FREEMAY
 HOUSTON, TX 77023

S3A JOB #: 051060 DATE: 09/13/05 SCALE: A-4.1 SHEET #: 4 of 10
 REV'D BY: SSP ON

DESCRIPTION	MATERIAL / FINISH	COLOR
1	TILT - UP WALL	CONCRETE - PRIMER - PAINT
2	TILT - UP WALL	CONCRETE - PRIMER - PAINT
3	TILT - UP WALL	CONCRETE - PRIMER - PAINT
4	MANSCOT & CAP	SPLIT FACE CONCRETE
5	HAROLEE & COLUMNS	EXTERIOR GEMENT PLASTER OVER PAPER-BACKED METAL LATH
6	PLASTER CHANNEL	FRY PCS-75-102 ALUMINUM REVEAL
7	SPANDREL GLASS	BLUE VELVET TRANSLUCENT
8	SPANDREL DOORS & WINDOWS & TRANSOM	ALUMINUM / GLAZING FIN. 1/4" THICK FLAT GLASS TEMPERED WHERE NOTED
9	ANNINGS	GALVANIZED STEEL W/ ALUMINUM PERFORATED SCREEN, 1/2" X 1/2" TWIN BLOCK
10	SIGNS	PROVIDE BACKING WHERE NOTED FOR SIGN SUPPORT. SIGNS BY OTHERS, UNDER SEPARATE PERMIT.
11	-	-
12	-	-



SOUTHWEST ELEVATION-ENTRY



WEST ELEVATION-FREEMAY

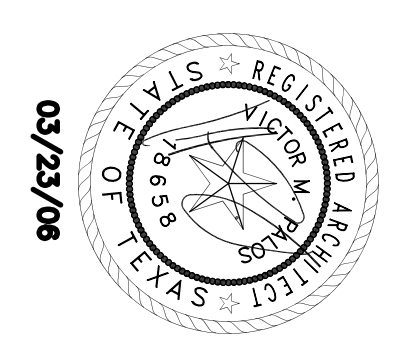
20101 S.W. BIRCH ST. SUITE 210
NEWPORT BEACH, CA 92660
(949) 660-7985 (FAX) 660-7987
CONTACT: JULIO GONZALEZ, ARCHITECT

325 NO. SECOND AVE. SUITE F
UPLAND, CA 91786
(909) 982-1717 (FAX) 982-6626
CONTACT: VICTOR PALOS, ARCHITECT

111 NO. LA BREA AVE. SUITE 307
INGLEWOOD, CA 90301
(310) 693-0585 (FAX) 693-0593

CONSULTANT:

PROFESSIONAL SEAL:



SHEET TITLE:

**EXTERIOR
ELEVATIONS**

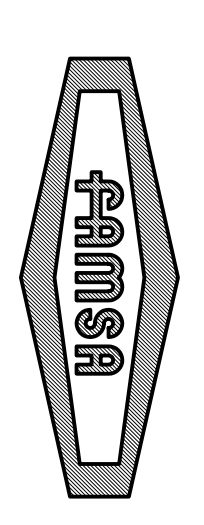
NO. DATE ISSUES & REVISIONS BY APP'D

- 12/20/05 PC SUBMITTAL
- 1/11/06 BID SET
- 2/02/06 PC RESPONSES / COORDINATION
- 3/23/06 PC RESPONSES / COORDINATION
- 3/28/06 PC RESPONSES / COORDINATION
- 4/03/06 ISSUED FOR CONSTRUCTION

REMARKS: SEPARATIONS AND OTHER VISUAL AIDS, AS SHOWN IN THESE ELEVATIONS, ARE FOR INFORMATION OF THE ARCHITECT. THE ARCHITECT SHALL BE RESPONSIBLE FOR VERIFYING THE ACCURACY OF ALL DIMENSIONS AND MATERIALS. THE ARCHITECT SHALL BE RESPONSIBLE FOR VERIFYING THE ACCURACY OF ALL DIMENSIONS AND MATERIALS. THE ARCHITECT SHALL BE RESPONSIBLE FOR VERIFYING THE ACCURACY OF ALL DIMENSIONS AND MATERIALS.

COPYRIGHT STUDIO 3 ARCHITECTS 2005

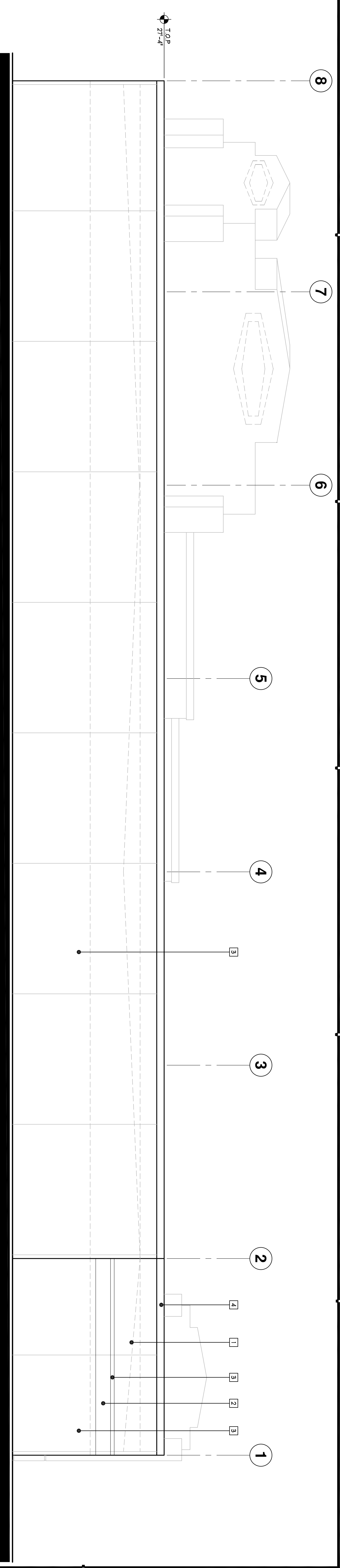
TENANT:



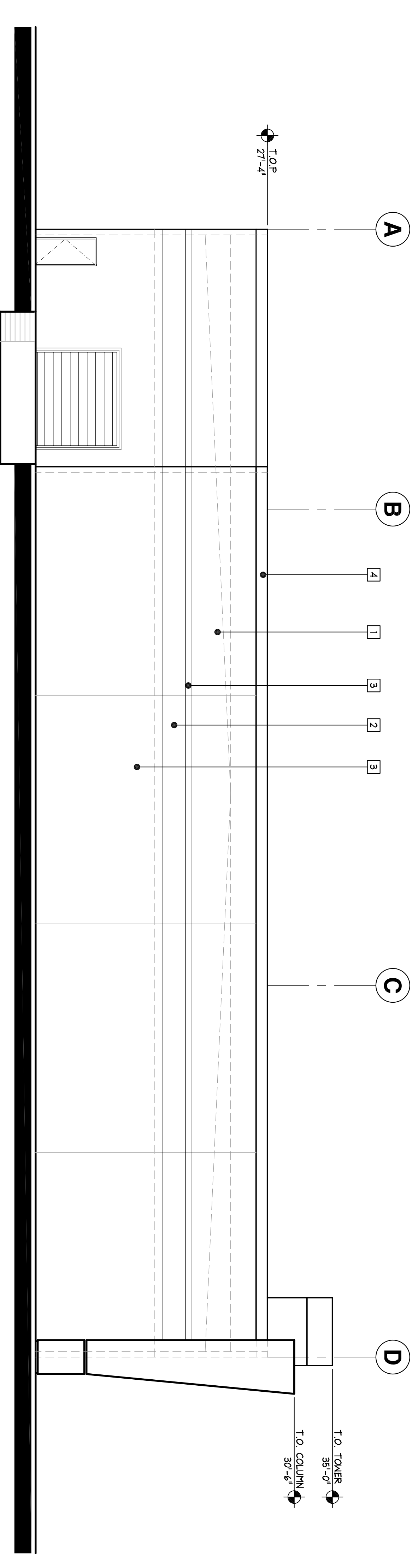
FAMSA, INC.
ATTN: OSCAR BRACAMONTE
1810 S. BROADWAY
LOS ANGELES, CA 90015
(213) 763-7877
(FAX) 763-7876

7440 NORTH FREEMAN
HOUSTON, TX 77023

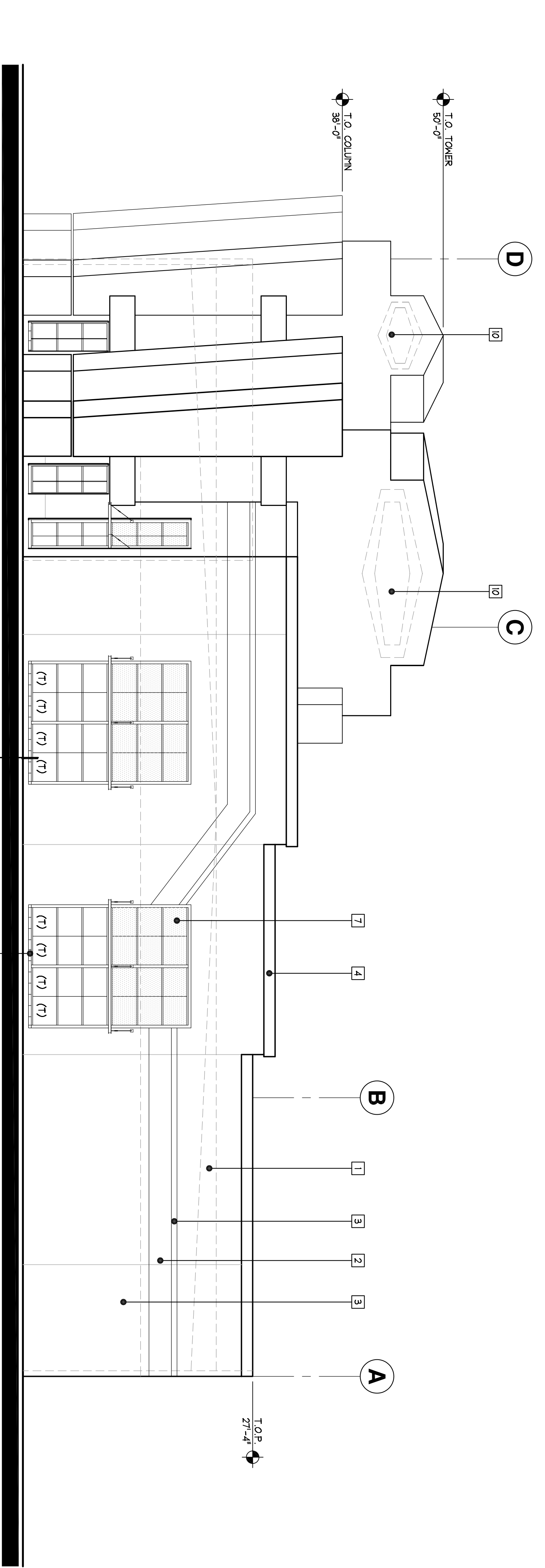
S3A JOB # DATE SCALE SHEET #
051060 09/13/05 NOTED A-4.2
REV'D BY SSP ON 5 of 11



EAST ELEVATION



NORTH ELEVATION



SOUTH ELEVATION

DESCRIPTION	MATERIAL / FINISH	COLOR
1 TILT - UP WALL	CONCRETE - PRIMER - PAINT	ICI# 182 BLAZER BLUE
2 TILT - UP WALL	CONCRETE - PRIMER - PAINT	ICI# 182 OLD GLORY
3 TILT - UP WALL	CONCRETE - PRIMER - PAINT	BRIGHT WHITE - SUBMIT FOR APPROVAL
4 MANSOET & CAP	SPLIT FACE CHU VERBER	NATURAL COOL GRAY
5 STAIRS & COLUMNS	EXTERIOR CEMENT PLASTER OVER PAPER-BACKED METAL LATH	BRIGHT WHITE - SUBMIT FOR APPROVAL
6 PLASTER CHANNEL	FRY FCS-75-100 ALUMINUM	CLEAR ANODIZED
7 SPANDREL GLASS	BLUE VELVET TRANSLUCENT	MC1842 - CESAR COLORING (600) 275-7272
8 STOREFRONT DOORS & WINDOWS & TRANSOM	ALUMINUM / GLAZING - 1/4" THICK FLOAT GLASS	CLEAR ANODIZED ALUMINUM / CLEAR GLASS
9 AWNINGS	GALVANIZED STEEL W/ ALUMINUM PERFORATED SCREEN. HTL. ROD W/ TURN BUCKLE	GALVANIZED STEEL
10 SIGNS	PROVIDE BACKING WHERE NOTED FOR SIGN SUPPORT.	SIGNS BY OTHERS, UNDER SEPARATE PERMIT.
11	-	-
12	-	-



PAMSA

Tu Tienda Sin Fronteras

PAMSA

PAMSA

Advance!
Auto Parts

Furniture

Appliances

Services

